

## ***MMUN Galapagos Environmental Summit***

***January 31th-February 7th, 2017***

### **About the Galapagos**

The Galapagos Islands are located in the Pacific Ocean, 650 miles off the coast of Ecuador in South America. They are isolated from any other island group or land form. Located at the confluence of three ocean currents, the Galápagos are a 'melting pot' of marine species.

Galapagos is also a UNESCO World Heritage Site. These islands are home for dozens of species of both plants and animals found nowhere else in the world. The Galapagos Tortoise, for example, is the largest reptile found anywhere on the planet, and it lives longer than any animal known to man. The oldest is currently over 170 years old and lives in a zoo in Australia. Other unique animals include the Flightless Cormorant, the Marine Iguana, the Galapagos Penguin, and Darwin's Finches. Darwin's visit to the Galapagos for five weeks in 1835 on the HMS Beagle was the starting point for the development of his theory of natural selection.

### **Daily Discussions**

After each day of exploration on the islands we will convene in the boat lounge for our daily debriefing. Some of the topics to be discussed include:

- How Ecuador and the Galapagos Park have worked for the conservation of Land and Marine life.
- The global recycling and waste disposal policies, their effectiveness and ineffectiveness worldwide.
- The uniqueness and diversity of Marine life, Land Animals, Plant life in the Galapagos found nowhere else in the world.
- The urgency and need of conservation efforts, and examples of how these could be implemented locally and globally.
- How students can create similar conservation efforts in their community to protect wildlife, marine life, plant life and the environment in general.

Students will be inspired by what they see and experience to help create their own action plan when they return home.

### **Galapagos Tour Guides**

Galapagos Park rangers, who are also certified tour guides, will lead our group excursions.

- Galapagos tour guides are some of the best industry;
- Highly trained specialists;
- Spend years studying the Galapagos Unique Ecological Environment;
- Fluent English and Spanish speakers and are excellent communicators;

**Study Guides**

Study guides will be available for download on the website by **September 5<sup>th</sup>, 2016**. These guides will help you to prepare your students on topics such as the following:

- The Marine life, Land Animals, and Plant life they will see on tour in the Galapagos Islands.
- Environmental policies and actions used in the Galapagos, and globally.
- Conservation programs that students can and will be encouraged to implement locally.

## ***Tour Itinerary***

***January 31th-February 7th, 2017***

### **Jan 31<sup>st</sup>, Summit Day 1**

---

#### **AM: San Cristobal Island Airport**

- Arrival and Transfer to boat

#### **PM: San Cristobal Island**

##### **Puerto Chino or Breeding Center Jacinto Gordillo**

- Puerto Chino

Located 15.2 miles away from Puerto Baquerizo Moreno and a few miles from the Breeding Centre Cerro Colorado. This walk takes approximately 30 minutes to the beach.



- “Galapaguera” Cerro Colorado

Is a new visitor site in the northeast part of San Cristobal Island and can be reached in roughly one hour from Puerto Baquerizo Moreno. On the trees and shrubs surrounding the site, you may see land birds like warblers, finches and mockingbirds. Giant tortoises can also be observed along the trail.

*Activities: Hiking, swimming, snorkeling*

*Type of Landing: Dry*

*Difficulty: Moderate / difficult*

*Highlights: White sandy beach, marine birds, snorkeling*

### **February 1<sup>st</sup>, Summit Day 2**

---

#### **AM: Santa Fe Island**



- Santa Fe (Barrington) is home to the small picturesque bay and anchorage on the island's northeast coast. The bay has two visitor trails, one leading to a scenic viewpoint atop a cliff, and the other spanning from a small beach to a tall prickly pear cactus forest.

*Highlights: Land iguanas, giant tunas*

*Activities: Hiking*

*Type of Landing: Dry landing*

*Difficulty: Moderate*

### **PM: South Plaza Island**

- This small island with steep cliffs was formed by rising lava and is now covered by Opuntia cacti. It is also home to one of the largest sea lion colonies as well as colorful yellow and red land iguanas. One type of plant characteristic to the South Plaza Island is Sesuvium. During the rainy season its color is a greenish to yellowish tone and in the dry season (end of June through January) a bright red.

*Highlights: Land iguanas, sea lion colony, Audubon's shearwaters, swallow-tailed gulls, Nazca boobies, and amazing landscape with cliffs*

*Activities: Hike (1.5 miles)*

*Type of Landing: Dry landing*

*Difficulty: Moderate*

### **February 2<sup>nd</sup>, Summit Day 3**

---



### **AM: Santa Cruz Island Charles Darwin Station**

- The Charles Darwin Research Station is home to turtles ranging from 3 inches (new hatchlings) to 4 feet long. The babies are kept until they are about four years old and strong enough to survive on their own.

*Highlights: Giant tortoises in captivity*

*Activities: Walking*

*Type of Landing: Dry landing*

*Difficulty: Easy*

### **PM: Santa Cruz Island Twin Craters**

- Los Gemelos, or the Twin Craters, are located off the road that leads from Puerto Ayora to Baltra. The name is only figurative; these rock formations are not real craters caused by impact, but are sink holes that were created when the volcanic roof of empty magma chambers collapsed from tectonic shifts and erosion over time. The view is breathtaking.

*Highlights: Pit craters, Scalesia forest*

*Activities: Short hiking*

*Type of Landing: Dry landing*

*Difficulty: Moderate*





## February 3<sup>rd</sup>, Summit Day 4

---

### **AM: Isabela Island Sierra Negra Volcano**

- The Sierra Negra is a large shield volcano at the Southeastern end of Isabela Island that rises to an altitude of 1124m. This site offers impressive views and the opportunity to observe up to 7 species of finches and a wide variety of vegetation. In the north side of the caldera you will see evidence of its most recent volcanic activity in 2005.



*Highlights: Basaltic caldera, stunning views, finches*

*Activities: Hiking, horseback riding, walking*

*Type of Landing: Dry landing*

*Difficulty: Moderate*

### **PM: Isabela Island Wetlands, Wall of Tears, Tortoise Breeding Station**

- The Wetlands of Isabela Island are located just outside of Puerto Villamil. The Wetlands consist of lagoons, swamp and mangroves, and are home to a variety of unique bird species such as common stilts, whimbrels, white-cheeked pintails, and gallinules. The Wetlands can be visited on foot via a path that winds through the swamps.

*Highlights: Giant mangroves, shore birds*

*Activities: Hiking*

*Type of Landing: Dry landing*

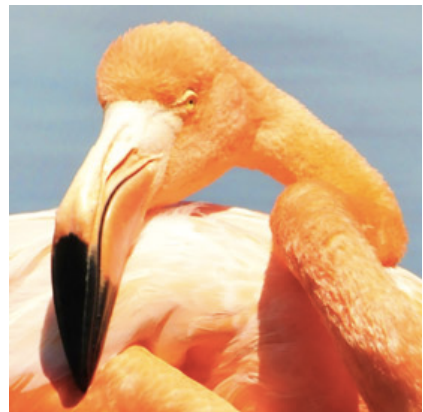
*Difficulty: Easy*

## February 4<sup>th</sup>, Summit Day 5

---

### **AM: Isabela Island Moreno Point**

- Moreno Point is located near Elizabeth Bay on the west coast of Isabela Island. The plethora of birds seen during a dinghy ride along the striking rocky shores or a hike along the path of lava rocks leading to tide pools and mangroves create a birdwatcher's delight. In the tide pools, green sea turtles or white-tip sharks can be spotted.



*Highlights: Flamingos, gallinules, pintail ducks, turtles, white-tip reef sharks.*

*Activities: Snorkeling, dinghy ride & hike (1.2miles/2km)*

*Type of Landing: Dry landing*

*Difficulty: Moderate / difficult*

**PM: Isabela Island**

**Tagus Cove**

- Tagus Cove is located across from Fernandina Island near the Bolivar Channel. Ships have frequented this spot since the 1800s using the area as an anchorage site. Punta Tortuga, just north of Tagus Cove, is another lovely beach surrounded by mangroves.

*Highlights: Penguins, flightless cormorants, Darwin Volcano & Lake Darwin*

*Activities: Long hike, snorkeling, and dinghy ride*

*Type of Landing: Dry landing*

*Difficulty: Moderate / difficult*

---

**February 5<sup>th</sup>, Summit Day 6**

**AM: Fernandina Island**

**Espinosa Point**

- No foreign species have ever invaded Fernandina Island, and therefore it is one of the world's most pristine island ecosystems. The volcano "La Cumbre" dominates the land space with lava fields reaching the ocean. This area provides a great opportunity to see the Galapagos hawk.

*Highlights: Flightless cormorant, marine iguanas, 'a'a lava, sea lions, penguins, active volcano "La Cumbre"*

*Activities: Hike (1.2 miles/2 km)*

*Type of Landing: Dry and slippery at low tide*

*Difficulty: Moderate*

**PM: Isabela Island**

**Vicente Roca Point**

- Located on the northwestern coast of the island and comprised of two separate coves, this site is a large bay with spectacular sea life. Seahorses, sea turtles, and the strange yet fascinating Mola mola (sunfish) may be spotted here. This bay is great for diving and snorkeling.

*Highlights: Penguins, blue-footed boobies, terns, Nazca boobies, sea lions, sea turtles, rays and puffer fish.*

*Activities: Snorkeling & dinghy ride*

*Type of Landing: No landing*

*Difficulty: Easy / moderate*

## February 6<sup>th</sup>, Summit Day 7

---

### AM: Santiago Island

#### Espumilla Beach or Bucanero Cove

- Espumilla Beach is a popular place for marine iguanas and Sally lightfoot crabs. The crabs attract the hunting herons performing the dance of predator and prey. With an abundance of marine life including octopi, moray eels, and sharks, snorkeling is highly recommended.

*Highlights: Snorkeling*

*Activities: Snorkeling and swimming*

*Type of Landing: Wet landing*

*Difficulty: Easy*

### PM: Bartholomew Island



- Home of the famous Pinnacle Rock, Bartholomew consists of an extinct volcano with a variety of red, orange, black and even green volcanic formations. A trail of stairs leads to the summit of the volcano, boasting one of the best views of the islands. The beach is perfect for snorkeling and possible sighting of the Galapagos penguin.

*Highlights: Pinnacle rock, panoramic view, moonlike landscape, penguins, pioneer plants, lava cactus, penguins, reef sharks, rays, and great colorful fish.*

*Activities: Dinghy ride, snorkeling & hiking (1.2 miles/ 2 km). Walk to top of volcano (375 wooden steps).*

*Type of Landing: Dry and wet landings*

*Difficulty: Moderate/difficult*

## February 7<sup>th</sup>, Summit Day 8

---

### AM: North Seymour

- Galapagos sea lions, blue-footed boobies and magnificent frigate birds are found in abundance in the North Seymour Island. The island was formed by a series of submarine lava containing layers of sediment that were uplifted by tectonic activity. The arid vegetation zone is a predominant characteristic of this island.

*Highlights: Land & marine iguanas, frigate birds, blue-footed boobies, sea lions, rays, reef shark, fish and garden eels.*

*Activities: Dinghy ride & hiking (1.5 miles / 2.5 km)*

*Type of Landing: Dry landing*

*Difficulty: Moderate / difficult*



**PM: Transfer to Baltra Airport**

- Fly Home

## **MMUN Galapagos Environmental Summit Package Information**

**January 31th-February 7th, 2017**

### **Summit Package Price Includes:**

- Breakfast, lunch and dinner daily
- Full-time services of a professional Tour Director
- Guided sightseeing led by Galapagos Park rangers
- Visits to select attractions as per itinerary
- Galapagos airport pick up and drop off
- All tips

### **Pricing\***

- \$3,599USD per student in double accommodation
- \$3,999USD per adult in double accommodation

*\*Pricing based on double occupancy*

*\* Single room supplement is 60% of package price per person*

### **Summit Package Price does not include:**

- Airfare
- Trip insurance. Although it is highly recommended. Send your inquire for group quote to [Raphael@montessori-mun.org](mailto:Raphael@montessori-mun.org)
- Galapagos Park entrance fee due upon arrival at Galapagos airport

### **Payment\***

- Sign up deposit of \$500USD due by July 31<sup>st</sup>, 2016
- Remainder due by October 31<sup>st</sup>, 2016

*\*Payments are non-refundable*

### **Booking Policies**

There are 4 cabins on the top decks that have larger windows, which will go to the first Adults that sign up. The lower deck rooms only have smaller windows. Every room has its own private bathroom.

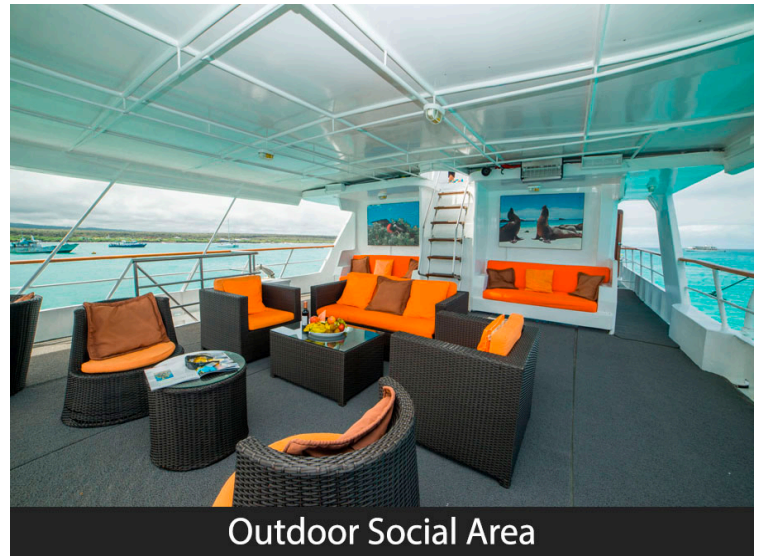
### **The Boat**

The Galaven is an 88 ft. expedition vessel for 20 passengers accommodated in 11 double cabins, all with private bathrooms, air-conditioning and ocean view. It offers spacious outdoor seating areas with sun chairs, large interior dining room and a library equipped with a TV & DVD player for daily briefing and presentations.

See boat pictures on the following page.



Coffee Station



Outdoor Social Area





Main Deck Bunk Bed



Main Deck Social Areas

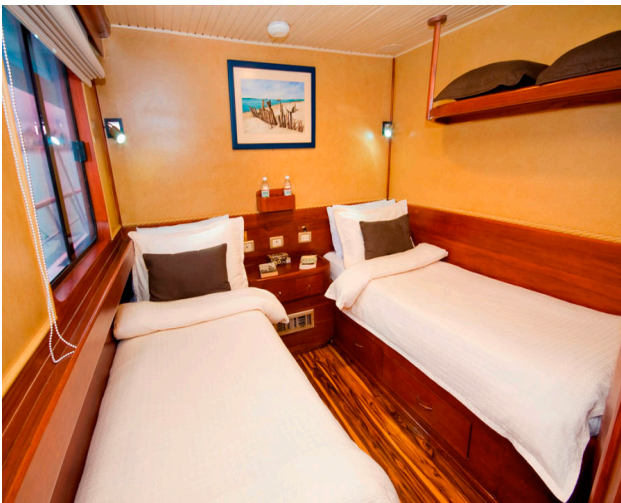


Sun Deck





Main Deck Twin Cabin



Sun Deck Twin Cabin



Upper Deck Cabin



Dining Area